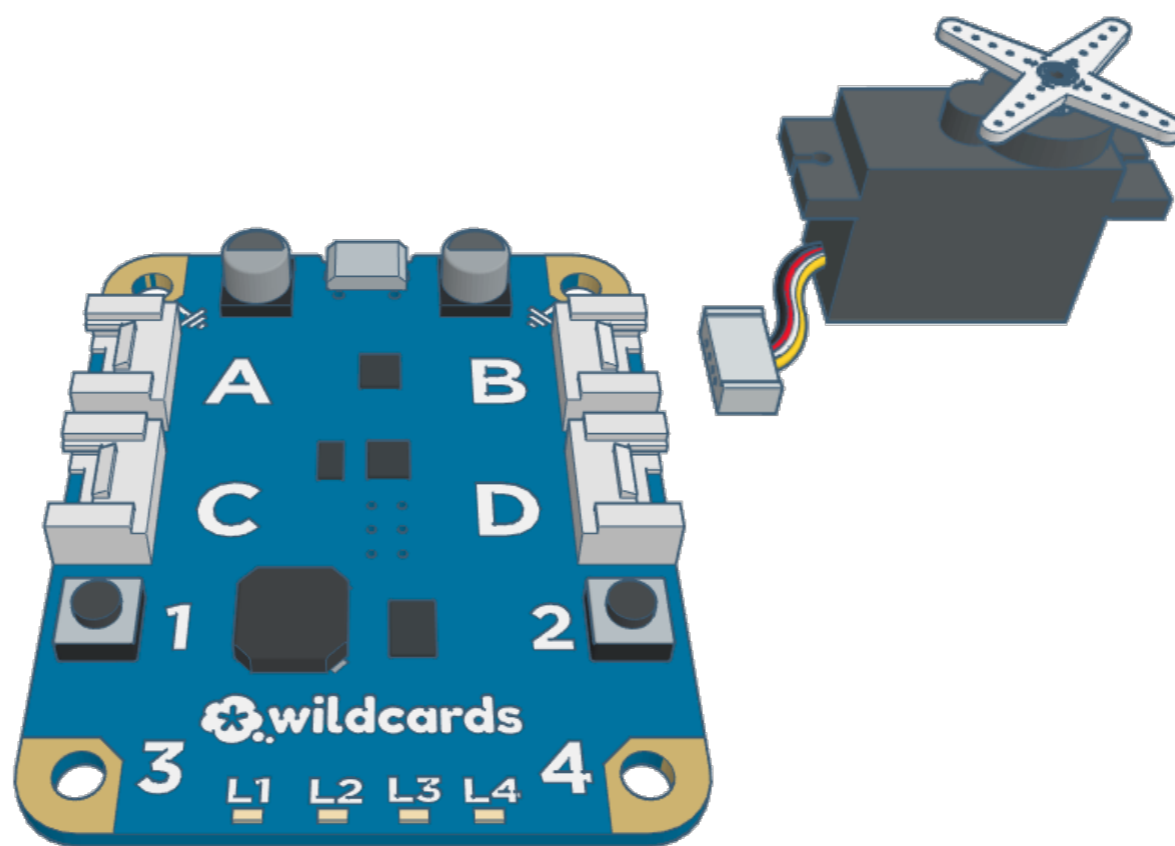


Servo Limits

Level 3

Modules: Servo Motor

- Wildcards
- Events
- Control
- Operators
- Variables



```
when left arrow key pressed
  if my variable > 5 then
    change my variable by -5
    set servo to my variable %: Connector B
```

```
when right arrow key pressed
  if my variable < 95 then
    change my variable by 5
    set servo to my variable %: Connector B
```